



**BURCKHARDT**  
OF SWITZERLAND



**Hot** *Speed*

**Perforating Unit**

– 400 °C / 750 °F

– 300 m/min / 320 yds/min



## Hot Perforating Unit

<b>Machine Name</b>	<b>HotSpeed</b>
<b>Description</b>	Optimized design for converters where high temperature and speed is key while maintaining fast tool exchange
<b>Working width</b>	Up to 1'600 mm
<b>Perforating roller</b>	Core Ø 110 mm Perforating segments according to customer's specification Ø over pin tips: 130 – 200 mm
<b>Counter Roller</b>	Roller Ø 140 – 160 mm Tampico fibre brush <b>Option:</b> (according to application) <ul style="list-style-type: none"> <li>• Variation of brush fibers and arrangement</li> <li>• Rubber</li> </ul>
<b>Heating system</b>	«Hot Oven» construction Combination of external ceramic heating and internal resistance heating Combined Heating power: up to 13 kW per meter width
<b>Working temperature</b>	Up to 400°C (measured at perforating ring)
<b>Drive system</b>	2.2 kW, DC-motor, 50 Hz, 400 V
<b>Line Speed</b>	Up to 300 m/min (production speed depending on material and requested hole quality)
<b>Emergency brake system</b>	Emergency stop with electronic motor brake (< 1 second)
<b>Penetration adjustment</b>	Manual rotary position control and analog indication in increments of 0.1 mm
<b>Electronic control</b>	Cabinet with push buttons, temperature display and adjustment, line integration via 4 – 20 mA signal <b>Option:</b> Cabinet with Siemens touch-panel, control/ display of all mechanical functions and parameters as speed and temperature, line integration through 4 – 20 mA signal, manual synchronization adjustment, adaption of line speed and perforation speed at control panel, modem connection for remote maintenance
<b>Energy connection/ consumption</b>	50 Hz, 400 V, Energy consumption 15 kWh per meter working width
<b>External dimensions</b>	Total length = working width + 800 mm Height: 700 mm (approx.) Depth: 700 – 1000 mm (approx.)
<b>Options</b>	<ul style="list-style-type: none"> <li>• Segmented pinning for special perforating pattern</li> <li>• Dedicated construction for fast roller change</li> <li>• Dedicated construction for fast pin ring exchange without roller disassembly</li> </ul>



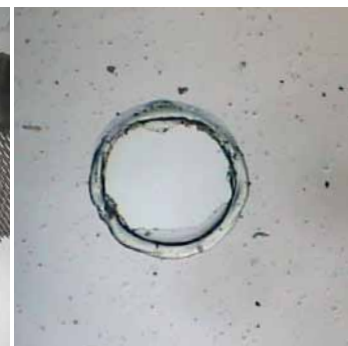
- High Temperature
- High Speed
- Easy Handling
- Compact Build
- Easy Integration



Penetration adjustment with display



Segmented rings are optional



Optimally sealed edge of the hole

Please contact us for more detailed information or visit us at [www.burckhardt.com](http://www.burckhardt.com)



**BURCKHARDT OF SWITZERLAND AG**  
Pfarrgasse 11, CH-4019 Basel  
Switzerland  
Tel +41 61 638 18 00  
Fax +41 61 638 18 50  
info@burckhardt.com  
www.burckhardt.com